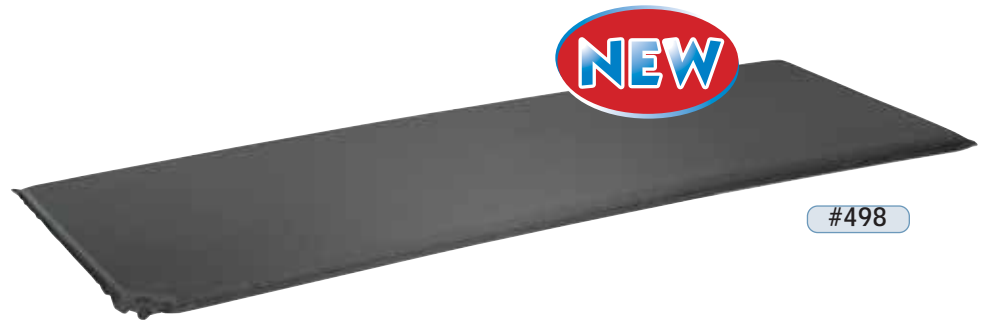


SLEEPING PADS/MATTRESSES

Self Inflating Air Mattress

Provides a warm and comfortable nights sleep on the roughest terrain. Fully bonded high density foam core for superior comfort and long life. Durable Oxford nylon outer shell helps hold bag securely to the pad. Brass valve for air tight seal even under very cold conditions. Two web straps with clips for easy storage and transport. Color: Forest green. Packed in colorful display box.

NEW	#496	Size > 48" x 25" x 1.5"	Ctn. of 6
NEW	#498	Size > 72" x 25" x 1.5"	Ctn. of 6



"Egg Crate" Style Pack-Lite

Keeps cold and dampness away from body. Durable, light-weight and comfortable. Made of high density closed cell foam laminated to egg crate style foam. Insulates and protects sleeping bags. Size: 72" x 20" x 1". Shrink pack with insert.

#505	Color > Blue/Black	Ctn. of 6
-------------	--------------------	-----------



"Pack-Lite"

Portable camping and backpacking pad. Made of closed cell foam insulation to keep cold and dampness away from body. Straps included. Color: Blue. Shrink wrapped with colorful insert label.

#502-B	Size > 50" x 19" x 3/8"	Ctn. of 12
#503-B	Size > 72" x 19" x 3/8"	Ctn. of 12



"Pack-Lite" Deluxe

Portable camping and backpacking pad. Made of closed cell foam insulation to keep cold and dampness away from body. Extra thick for a good night sleep on the roughest terrain. Straps included. Thickness: 5/8". Shrink wrapped with color insert label.

#504-B	Size > 72"L x 19" W x 5/8"	Ctn. of 6
---------------	----------------------------	-----------