

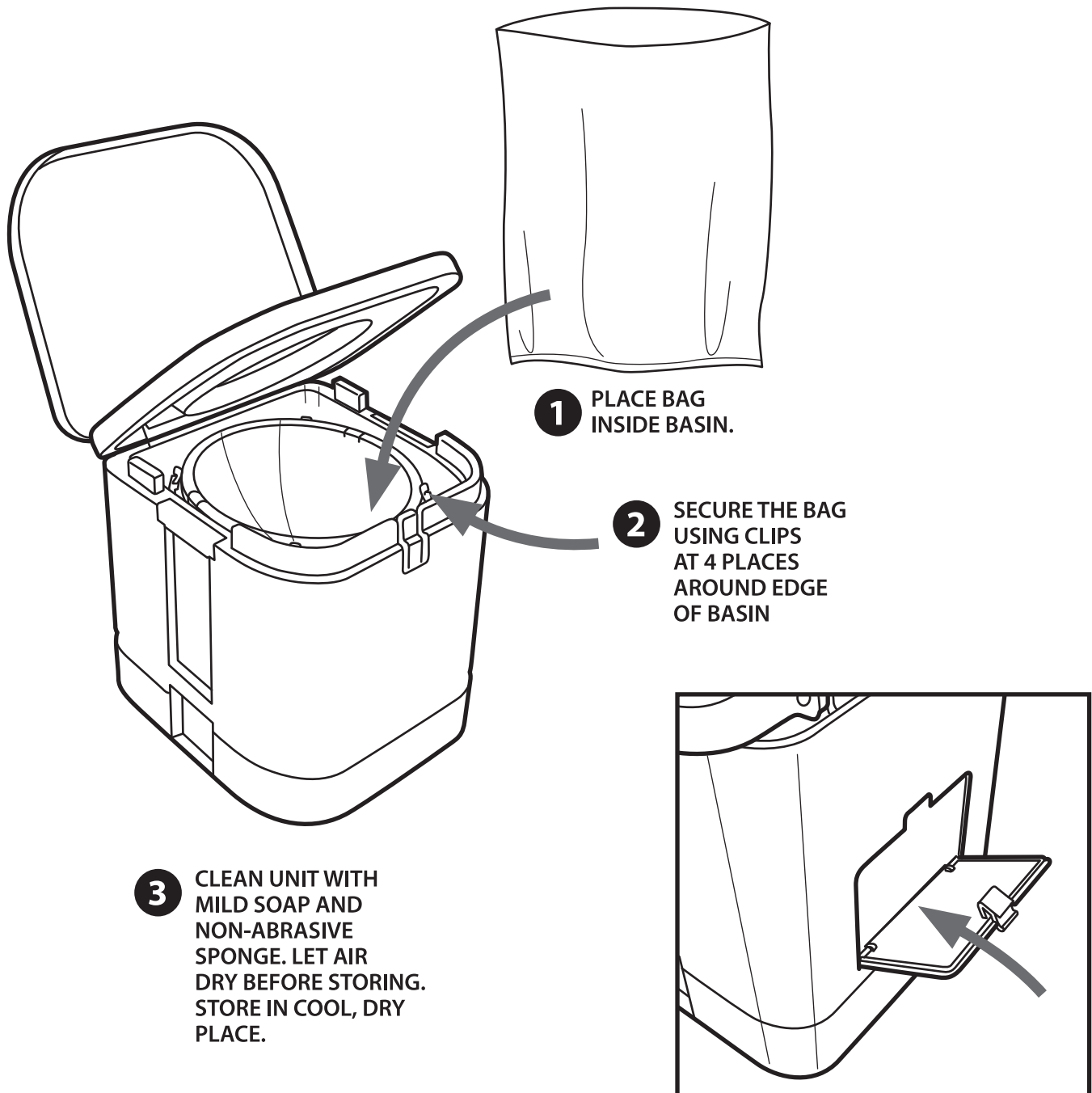


Portable Camp Toilet

Item # 273-100

WARNING:

Use extreme caution when handling waste bags. Utilize protective gloves and make sure to wash hands thoroughly after maintenance.
Do not set up toilet on uneven surface.
Do not lean back on seat cover when using.
Avoid placing unit in direct sunlight or expose to high temperatures.
Plastic bags can cause suffocation. Keep away from small children.



1 PLACE BAG
INSIDE BASIN.

2 SECURE THE BAG
USING CLIPS
AT 4 PLACES
AROUND EDGE
OF BASIN

3 CLEAN UNIT WITH
MILD SOAP AND
NON-ABRASIVE
SPONGE. LET AIR
DRY BEFORE STORING.
STORE IN COOL, DRY
PLACE.

COMPARTMENT AT BACK OF UNIT FOR
STORING EXTRA REPLACEMENT BAGS.

SEE OTHER SIDE FOR ADDITIONAL IMPORTANT INFORMATION

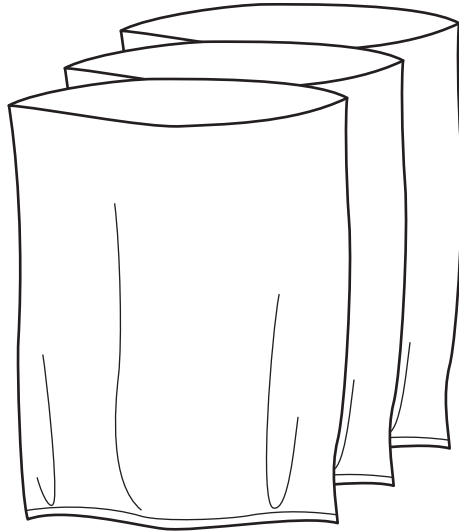


Disposable Toilet Bags

Item # 273-3

WARNING:

Use extreme caution when handling waste bags. Utilize protective gloves and make sure to wash hands thoroughly after maintenance. Plastic bags can cause suffocation. Keep away from small children and pets.



*Bio-degradable waste bags for the
273-100 Portable Camp Toilet*

IMPORTANT USAGE CAUTIONS:

Skin Contact: Biodegradable chemical in bags can irritate the skin. Do not expose the chemical to bare skin. Wear protective clothing, eye protection, and suitable resistant gloves. In case of contact, wash thoroughly with warm soap and water.

Eye Contact: In case of contact with eyes, irrigate well with water for at least ten minutes and consult a physician.

General Precautions: Do not smoke where this product is stored. Do not expose to open flame or temps above 145 degrees. Maintain adequate ventilation. Do not inhale vapors or ingest the biodegradable powder. Do not expose chemical powder to strong oxidizing agents.

Disposal: Dispose of all waste bags in the appropriate facility or receptacle in accordance with local regulations. Do not dispose of bag in ordinary trash cans or dumpsters.

Storage: Store waste bags in a cool dry location.

Shelf life: 18 months